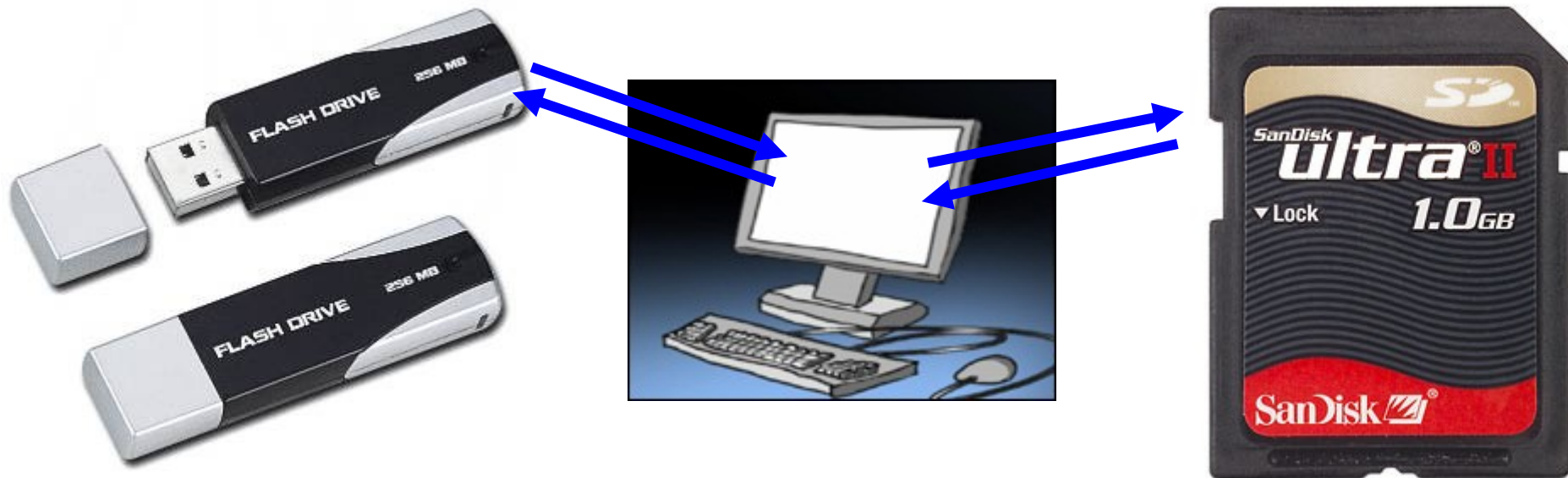


## Using a USB Drive / Memory Stick.





---

---

---

---

---

---

---

---


---

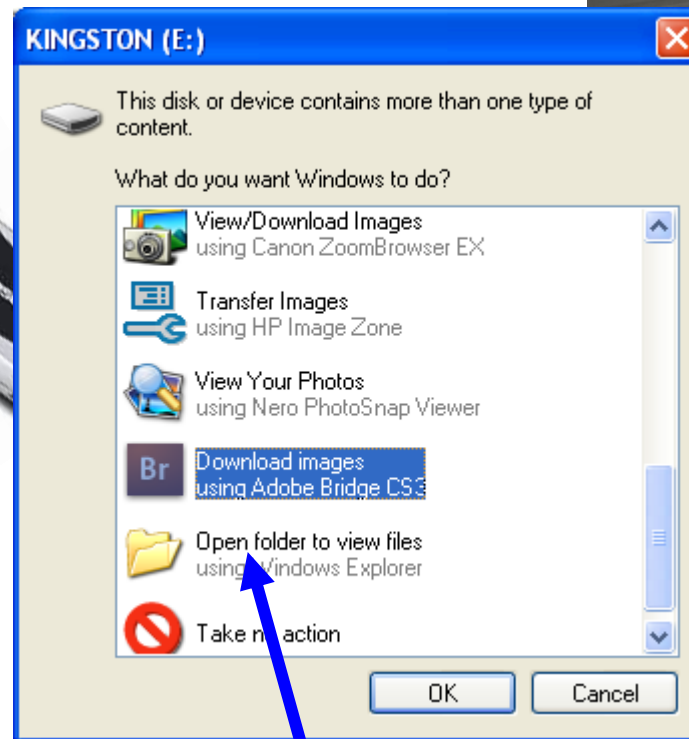
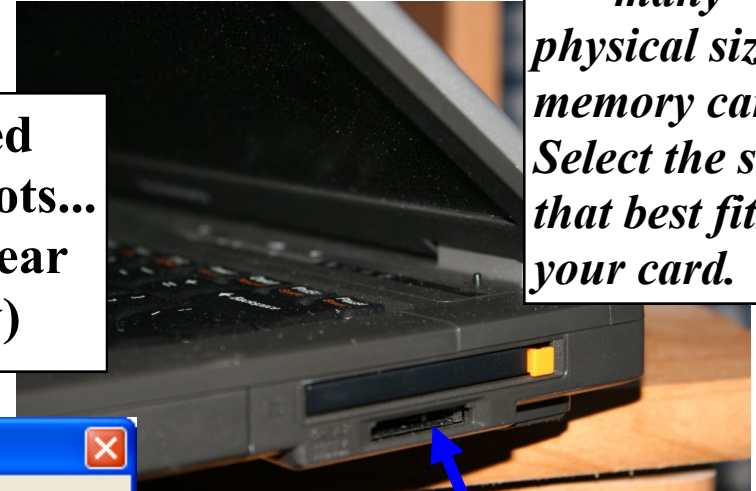


 **USB Drives,**  
along with all  
USB devices—  
go into any of  
these USB slots.



When either is inserted  
into their respective slots...  
This dialogue will appear  
on your screen. (below)

 **There are  
many  
physical sizes of  
memory cards.  
Select the slot  
that best fits  
your card.**

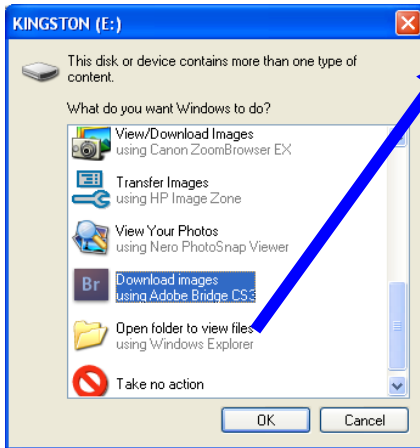



These are USB Drives—they are to  
computers today what floppy disks  
have been in the past. We use them  
for short to mid term storage of  
data (files, pictures, music etc)

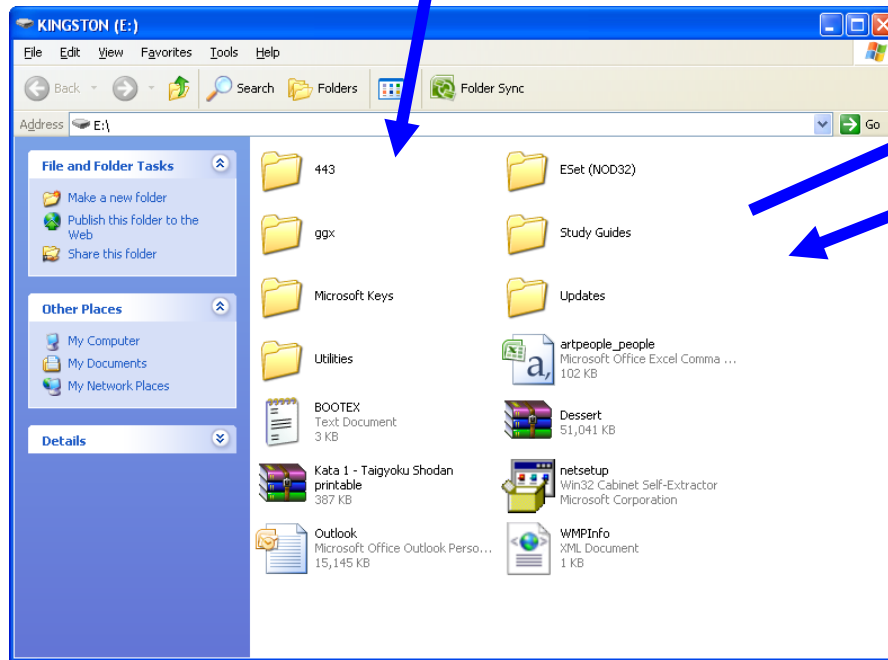
**In this guide—we'll choose ( ) This one.**




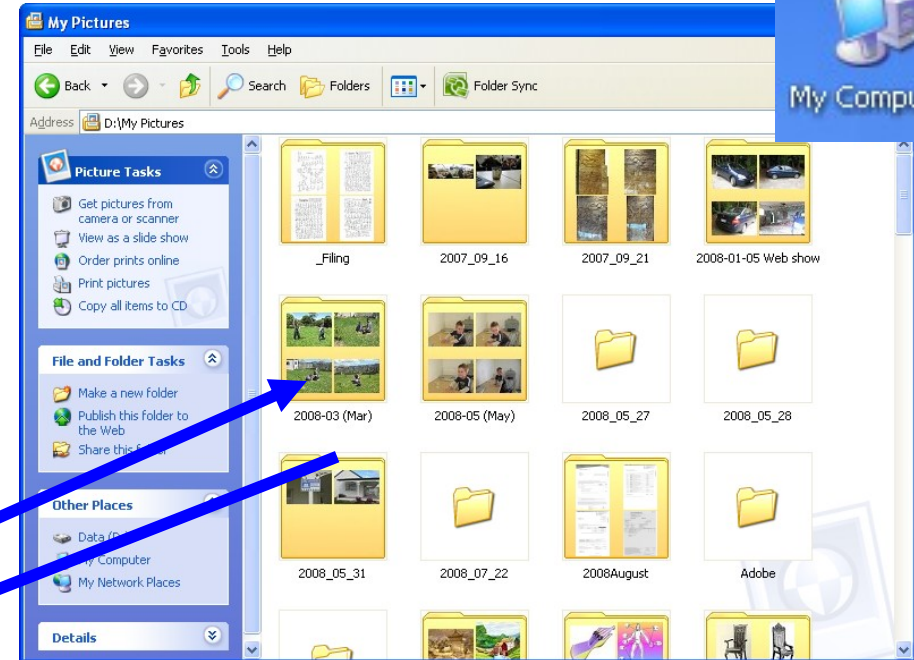
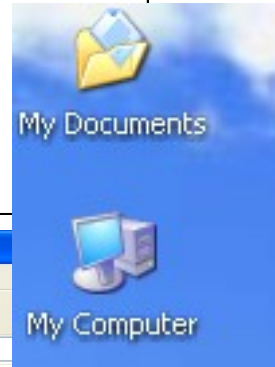
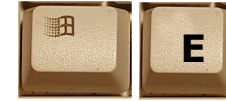
**This is a memory card.  
They are most com-  
monly used in digital  
cameras.**



 **When you select this option—**  
**Windows will show the contents of your USB/Memory Card to you in this sort of window.**



 **Remember that you can open a new window by double-clicking the files icons or using the Windows Key +E shortcut**



**Now you can pass files and folders to and from your hard drive—using the windows filing system. See your shortcuts guide for Cut/Copy and Paste.**



Try [www.mouseprogram.com](http://www.mouseprogram.com) for Mousing tutorials.